

# DOG PLAY GROUPS

## RUNNER TRAINING

# PURPOSE BEHIND PLAY GROUPS

*Before we can expect a sheltered animal to cope and thrive, we need to satisfy them at some level.*

## Who can be a Runner?

- Any dog walker with at least 10 hours & has completed this training
- Blue dot restrictions **do** apply, so if you have not completed the blue dot training, you will not handle blue dot dogs

# GETTING READY FOR A PLAY SESSION

# Roles Within the Play Groups

- Lead Handler: Manage/direct the play group session. Decides who comes in and goes out. Controls the gate. Reviews any notes before session, provides a “briefing” to everyone in the play group. May delegate working the gate to the handler, but still decides who comes in and with what equipment.
- Handler: assistant to the Lead. An extra set of eyes on the dogs. Takes direction from Lead Handler on when to use interruption/correction tools. May be asked to take notes during the play session.
- Runner: Transporter of dogs to and from the play yard. Timing of when and which dogs to bring to and from the play yard is decided by Lead Handler. Runner waits for direction from Lead Handler.

# Behavior Team-Before the Session Starts

- Compiles the potential play groups after reviewing prior notes and current dog population
- Fits dogs who will participate in groups for harnesses
- Assembles two-way radios and provides brief instructions to both runners and handlers
- Provides supply of “Come See Me in the Play Yard” cards to volunteer runners
- Leads the pre-session and/or a post-session review with team (i.e. who is doing what, anticipated dog line-up, other considerations for the session)
- A binder is kept with all session notes on dogs-this is mostly done by handler and the lead handler, but runners might be asked to take notes on occasion

# Volunteer Runners-Before the Session Starts

- Pick up any leftover toys in the play yard. Remove and take to the dog kitchen for washing
- Prep dog pools with fresh water from the hose
- Carry “Come See Me in the Play Yard” signs in apron/pocket
- Load treat pouch with treats and a squeaker toy
- Carry your two-way radio (if asked to carry one), use according to guidelines
- Emergency or urgent needs – use “STAT” after your request to the specific manager/department and your current location.  
Example, “Adoption Manager to play yard STAT”.
- As communication will be heard by the public, every user must communicate in a professional manner. Two-Way Radios must not be used for chit chat, jokes, or other inappropriate and non-work related communication.

# Before the Session Starts: In Pictures



Have Your Radio and  
"Come See Me" cards  
in your apron/pocket  
ready to go

**\*\*Runners may be  
asked to carry one.  
Lead Handlers always  
have a walkie.**

<b>Stray</b>		FOH Location: as of 2016-07-13 17:50:09 820
<b>Chill Time</b> Stage Review Date 7/15/2016		Date/Initials When New Arrival Exam DONE
Intake Sub-Type Stray with ID	Arrival Date 7/5/2016	Emancipation Date 7/12/2016
Species: Dog		<input type="checkbox"/> Time to Adjust
Gender: Male	Spay/Neuter?: Yes	<input type="checkbox"/> Scanned 982000365837079
Primary Breed: Terrier, Pit Bull	Primary Color: Black	
Age: 4 years	Adult (1yr+)	Weight: 47.60 pound
Collar:		
Declawed? No		
<hr/> <hr/> <hr/> <hr/>		
Animal # A30453840	Name: Dyson	

For Holding Locations -  
outside kennel card to  
identify dog



# Volunteer Runners: Getting the Dog From Kennel to Play Yard

- The Handler will let you know which dog to get

## Walker Guidelines:

- Only Blue Dot Walker/Runners can take blue dot dogs to the play yard
- Only Blue Dot Walker/Runners can take non-available Holding dogs to the play yard
- Any Runner can take non-blue dot dogs from the general adoptable area
- Any Runner can take available non-blue dot Holding dogs to the play yard

# Volunteer Runners: Getting the Dog From Kennel to Play Yard

- On the walker log, note your name and “PG” next to it to indicate “play group”
- Drop a “Come See Me” play group card into the kennel card sleeve
- Leash up the dog from outside the kennel (exceptions: kennels 26-29 which indicate where to exit from)
- All dogs coming to play group should be wearing a harness.

# On The Way To The Yard

Condition a positive response to the squeaker

- 1) Squeak the toy in your pocket.
- 2) Immediately deliver a treat.
- 3) Repeat 5-10 times until you see ears perk up and orienting towards you when they hear the squeak.

Squeakers are used as recall cues to call dogs away from play when breaks are needed.

# Dog Entering the Play Yard

- Enter staging area, close gate behind you.
- If your dog is joining other dogs, Handler will want them to “meet” at the gate.
- Lead Handler will let you know if they want a leash on the dog.
- Wait in staging area until Handler opens gate. If dog is leashed, let go and gently toss leash into yard with dog.

**Do not enter yard unless instructed**

**Pay attention to the Handler – s/he will give directions as needed.**

# Dog Exiting the Play Yard

(Same Walker Guidelines apply as getting dogs)


- Enter staging area, closing gate behind you.
- Wait until Handler opens the gate to allow the dog out of the yard and into staging area.
- If dog is leashed, take the leash from the Handler.
- Place kennel/walking leash back on dog, leash wrap if that is what the dog uses.
- Clip yard leash on the fence
- Exit staging area, closing gate behind you
- Return dog to kennel (general adoptable area or holding)

# Tips for When in the Holding Area

- Use the middle exterior door from the courtyard to enter – access code 4295#. This code will work for the middle door only (if it is not already open).
- Only interact with the dog you are instructed to get for the Play Group.
- In general
  - Dogs in Holding may not have had any kind of behavioral evaluation and so we do not know how safe they are around other people and dogs.
  - Even though they are under our care, until they are emancipated, they may not legally belong to HSHV.
- Always have a calm demeanor. Keeping the human noise down is very important.
- When you are in Holding, you are not authorized to enter the Animal Intake Department or Clinic.

# Holding Area – Walk Log

The Holding walk log is a white board hanging on the wall. It isn't the same paper log as in Adoptables. Looks like this ...

 Humane Society of Huron Valley

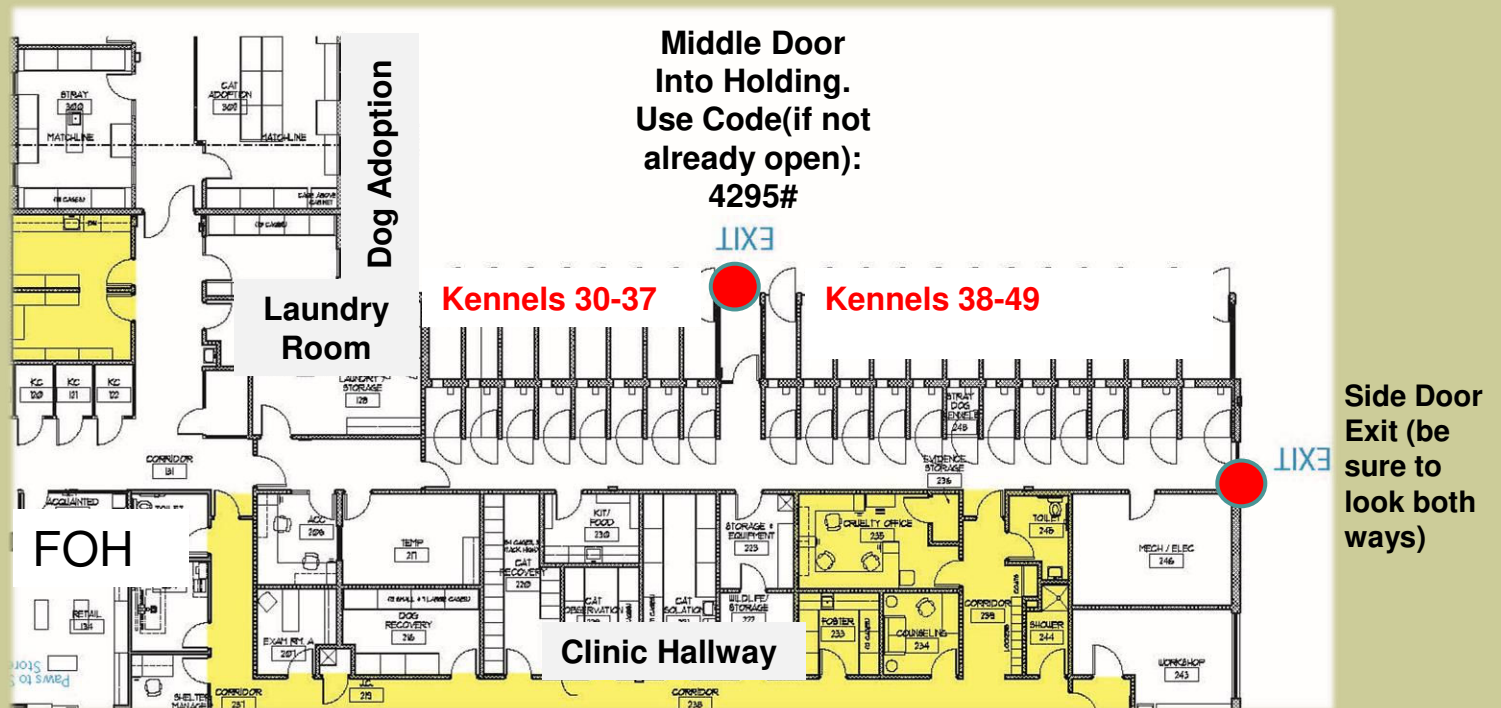
**Dog Holding - WALK LOG - July 14 - 2016**

NO Walk	HT	Cage	Name or Log # Spot	Special Diet w/d	Walker	#1 Walk 9:00	Walker	#2 Walk 12:00	Walker	#3 Walk 5:00	Special Instructions
		30	32148573		TOM	8:20	ELLEN	1:05			
	?	31	Storm								New 3:39 P.M.
		32	32146619		TOM	8:40	ELLEN	1:30			
		33	32145810								
		34	Ripsu	NCW		9:25am					
		35	32134603		TOM	9:05	Carman	3:10			
		36	Jimmy			10:27	Carman	3:35			
	✓	37	Tia								New 3:00 P.M.
	✓	38	Punch Williams		K9	7:39	ELLEN	12:00			
		39	Dyson		TOM	9:25	JD	2:55			
		40	freedom		Brian M.	7:15	Carman	3:40			Potty breaks only
		41	Harley		K9	8:20	ELLEN	1:50			
		42	Alcha		Brian M.	9:35		3:35			
	✓	43	SALLY		Brian M.	8:55	ELLEN	12:35			
		44	32148531		TOM	10:25		3:42			
		45	SOL		K9	8:44					
	✓	46	P.D.		K9	8:00	ELLEN	12:45			
		47	Ange								
		48	Elton		TOM	9:40					
		49	Diesel			8:37					Staff only!!

HT indicates will not eliminate in the kennel inside or outside.

# Holding-Exiting the Kennels

- You will still exit the kennel from the inside door.
- Because space is limited, exit either the middle or side door that minimizes stress to the dog





# Next Steps

- Watch the demonstration video that accompanies this training...
- On Volunteer Resource Page – <https://youtu.be/z1Dbvdiwhk0>
- Sign-Up for a Runner Shift! You are good-to-go!