

DOG WALKING IOQ

(ISOLATION, OBSERVATION, QUARANTINE)

HSHV VOLUNTEERS

Training Guidelines

- Volunteers interested in this role will need to:
 - Be active holding & blue dot dog walker
 - Complete the independent study to walk dogs in IOQ
 - Understand and respect the need for confidentiality
 - Be able to follow all guidelines as outlined in this training
 - Sign the statement of completed training and confidentiality form
- Keep communication channels open and honest

Training Goals

- This advanced training is an independent study program, no classroom training. The goal of this training is to provide:
 - ▣ An experienced holding volunteer an additional layer of knowledge and opportunity to work with dogs in IOQ
 - ▣ Information needed to successfully walk dogs in IOQ
 - ▣ An understanding and management of the types of dogs that may be in IOQ
 - ▣ Awareness to other things seen in IOQ



An Overview of IOQ

An Overview of IOQ

IOQ = Isolation/Observation/Quarantine

- This area may house some of our most vulnerable dogs.
 - They may be back there for any number of reasons. Injury, illness, aggression, extreme fearfulness, cruelty/abuse, safe harbor, new arrival, etc.
 - Some of them do not belong to HSHV.
 - Some are new arrivals who are unable to be checked in.
 - Waiting for space to open up in holding or FOH.
 - Sometimes the dogs will be unvaccinated.
 - Sometimes we have hospice animals housed in IOQ.
 - May be non-HSHV court cases.
 - Bite Quarantine of dogs we are unfamiliar with (ie- they came to the shelter as bite cases).
 - There will be dogs who cannot stand up, dogs in terrible physical condition, etc.

IOQ Walker Area Overview



IOQ Walker Area Overview

Dog Walker
Comment
Binder

Walkie Talkie
Station

Poop
Bags &
Treats



Behavior
Alert
Board

Kennel Numbering








On the “B” side/backside, the cage signs will include the corresponding cage number from the other side as well as a letter “B” to indicate the back side.

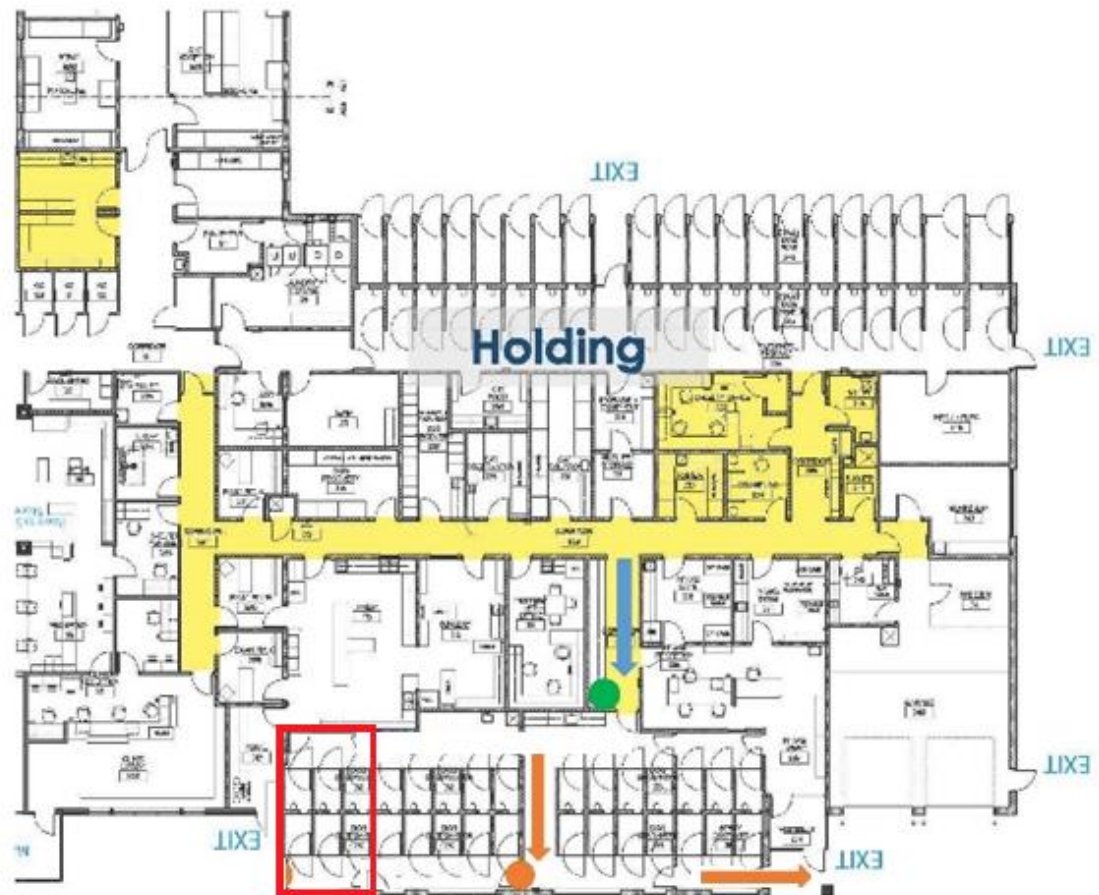
1-2 dogs will be housed in one/each of these kennels. On the front side, the cage signs will have just the numbers.



Map

Dogs – Isolation Walks

-  Route to get to IOQ door
-  IOQ door -
-  Isolation door -
-  Route to outside walking access
-  Parvo Isolation, do not enter



Head out to the parking lot for the walk.



Walking Logistics

Walker Board Overview

Leela - CR *Marley - west end*
1/8/12 *1/8/12*

DOG ISO WALK LOG

HT INDICATES WILL NOT ELIMINATE IN THE KENNEL INSIDE OR OUTSIDE

NO WALK	HT	CAGE #	NAME OR ID#	SPECIAL DIET	WALKER	#1 WALK	WALKER	#2 WALK	WALKER	#3 WALK	SPECIAL INSTRUCTIONS
		Q1	Pony								
		Q1B	Terrier								
		Q2	Keisha	3X	Keon	8:46					Stairs only
		Q2B	Silas		Keon	9:01					Go slow! Blue dot
		Q3	Maxwell		Mike R	8:57					Short walks! heavy
		Q3B	Georgie								
		Q4	Macaroni		Mike R	8:12					
		Q4B	Murphy		Mike R	8:34					
		OBS 1	Sailor		Mike R	9:04					
		OBS 1B	Driscoll		Mike R	8:43					Metal leash ONLY
		OBS 2									
		OBS 2B									
		OBS 3	Libby								
		OBS 3B									
		OBS 4	Debbie								Go slow
		OBS 4B									Go slow
		OBS 5	New								
		OBS 5B	New								
		ISO 1B									potty break; growling
		ISO 2									
		ISO 2B									
		ISO 3									
		ISO 3B									
STRAY DROP OFF											
		S 1									
		S 2	Tim								go slow - collar not tight
		S 3	Charlie								go slow, spread

HT column:

X or ? Indicates we know or believe dog to be housetrained

Be sure to check special instructions

Stray Drop off section: Do not walk unless it specifically says volunteers can

Walking Order

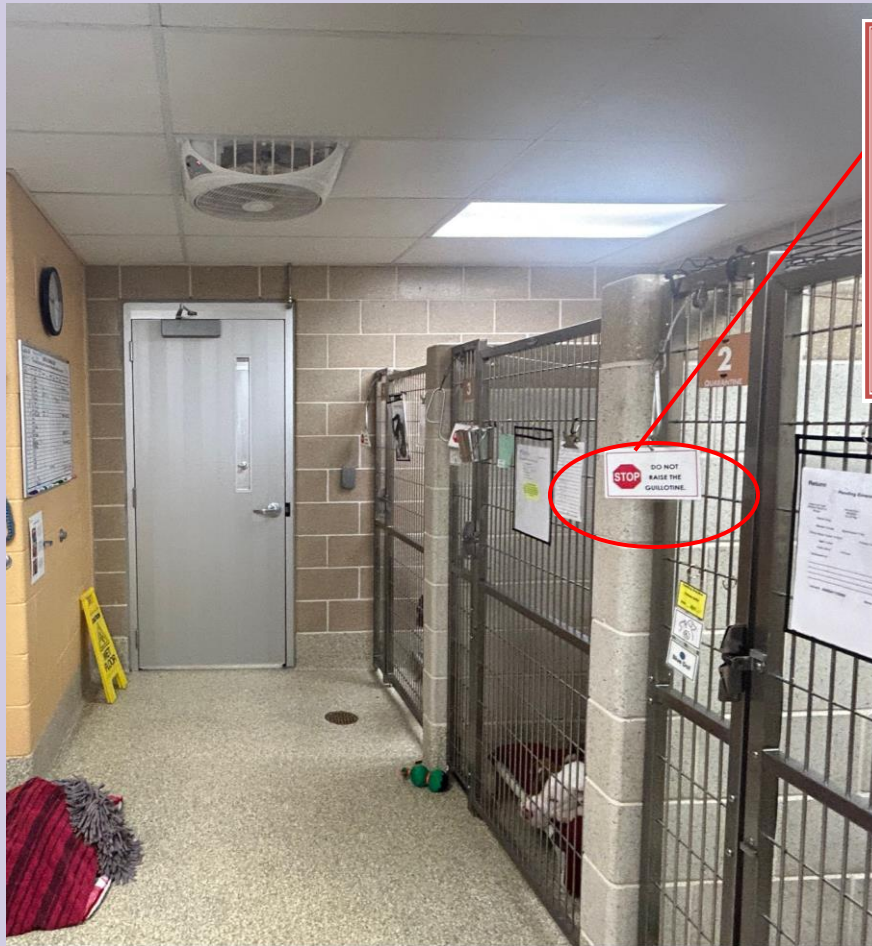
- Dogs with an **X** or **?** (not sure if housetrained) in the “HT” column get first priority if they aren’t staff only.
- After HT dogs, then move to dogs who are sharing a kennel, you will see this example below.
 - ▣ We can see Dory and Terrier are in ½ kennels (sharing a kennel...guillotine doors are shut and remain shut).
 - ▣ We would want to get Dory out after HT dogs, but would leave Terrier in the kennel since he is “staff only”

[illegible]

Walking Order

- ❑ Non sick dogs in IOQ can be walked during a normal shift
- ❑ The sick dogs (if they aren't staff only) in IOQ should be the absolute last thing you do at the shelter. When you are done - go home.
- ❑ See what diseases they are in treatment for
 - ▣ Remember: kennel cough dogs first, then ringworm. Do not visit or walk Parvo Dogs.
- ❑ Please note that most dogs who have Giardia or Ringworm will be "staff only" if you do see one who can be walked by a volunteer, please check with a staff member.

Dogs in ½ Kennels



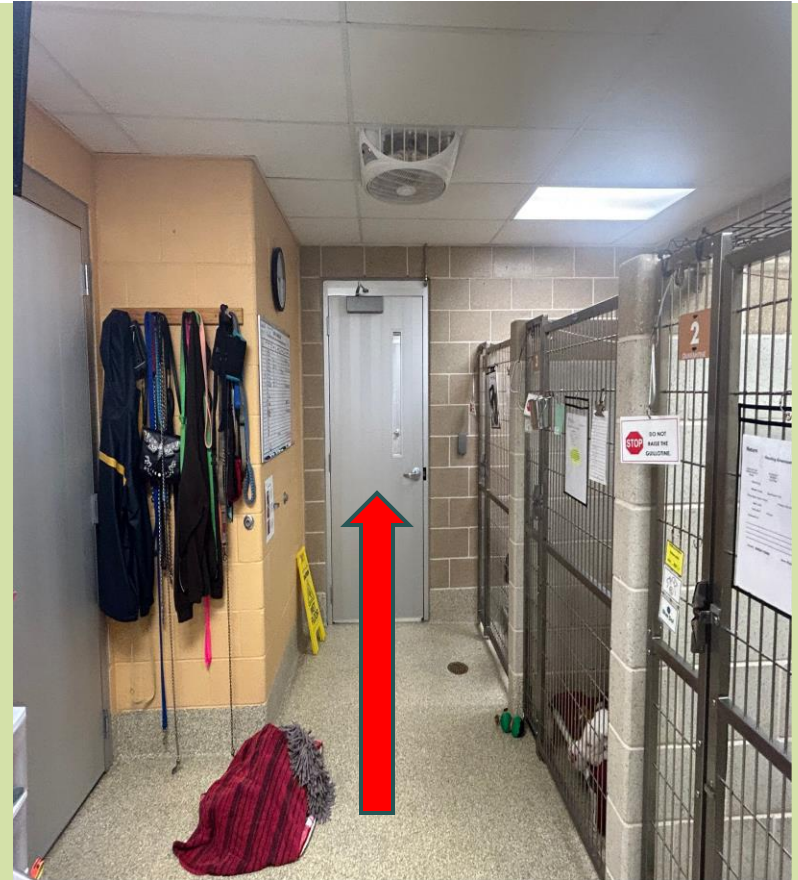
**DO NOT
RAISE THE
GUILLOTINE.**

In addition to the walker board, you will also notice this sign when dogs are sharing a kennel.

As indicated, please do not open the guillotine door.

Walking Logistics

- ❑ IOQ dogs going out from the “back” side of kennels sometimes have no cage cards/signage on that side- *it is important for you to remember who is where*
- ❑ If possible, dogs housed in kennels Q1-Q4 who are noted as being “dog reactive” can be walked through intake lobby if possible.



If a dog is noted as “dog reactive” and they are housed in Q1-Q4, try taking out through double doors into intake lobby (checking first to make sure no dogs in lobby area)

Walking Logistics - Sick Dogs

- ❑ You may walk more than one sick dog, ALL the PPEs must be changed between each animal when directed. No exceptions. Change booties one at a time to prevent shoes from touching floor.
- ❑ If you intend to “visit” in the kennel rather than walk, you may only do that with one dog, and it should be the last thing you do.
 - ❑ The extra exposure increases the risk of transmission.
 - ❑ Please remember to wash/sanitize hands
 - ❑ We recommend changing clothes at home, wash in hot water/color safe bleach, dry in dryer. Wipe down shoes.

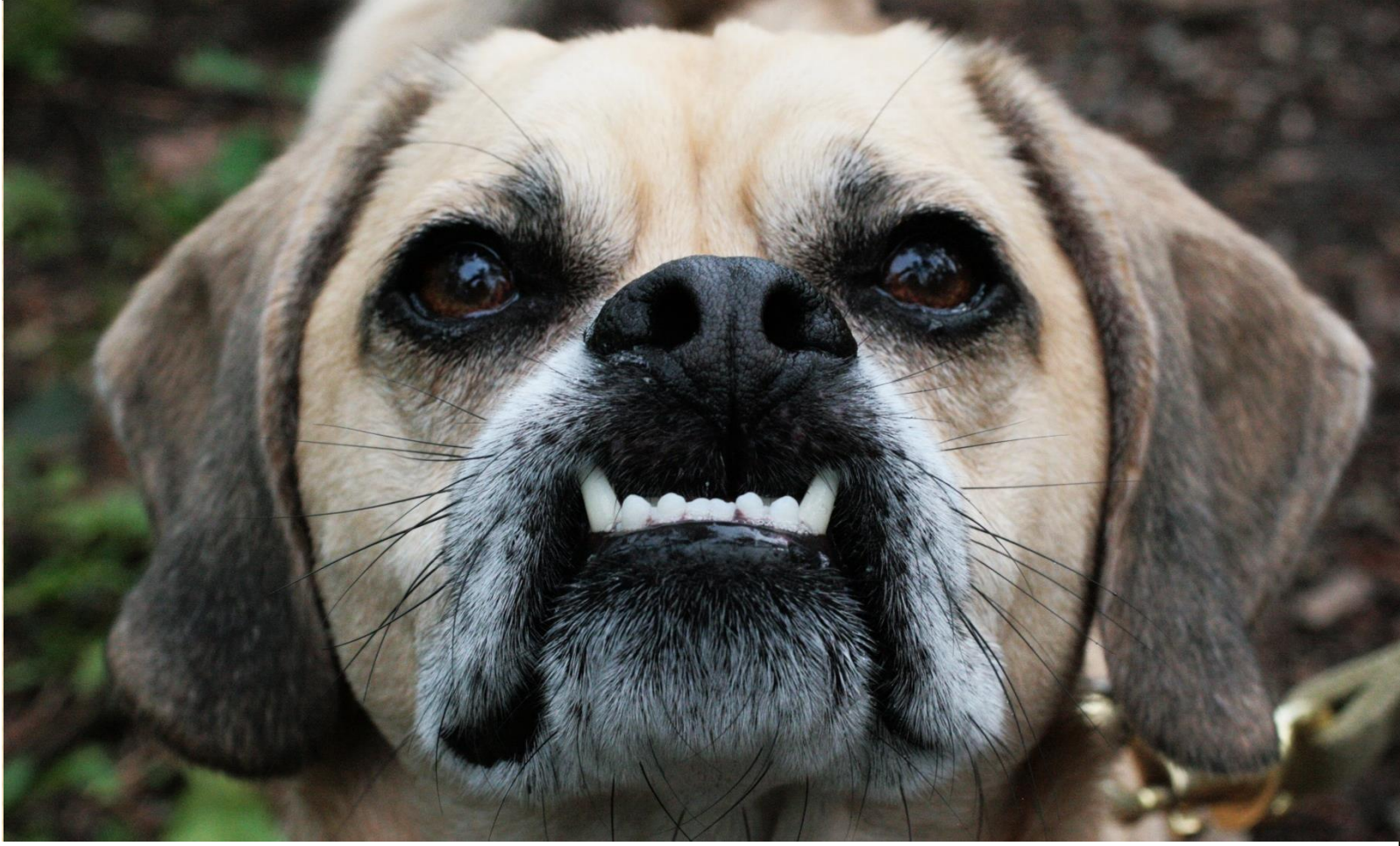
Walking Sick Dogs



The “Sick Island”, you may walk SICK dogs as many loops as needed around this area. Please do not let any public visit with the dogs (your PPEs might do the talking for you 😊)

Walking Logistics - Sick Dogs

- ❑ After your walk, bring the dog back and place in the kennel. Then:
 - ❑ Remove gown and gloves & toss in garbage.
 - ❑ Make your notes on the walker log.
 - ❑ Spray/wipe down the leash with Accel
- ❑ Change shoe covers (Okay to do this in the room-change shoe covers one at a time so shoes don't hit the floor), don clean gown and gloves.
- ❑ Take out next dog, repeating for as many dogs as you're taking out.
 - ❑ Remember: kennel cough dogs first, then ringworm. No walks or visits with Parvo dogs.
- ❑ You are done!



Important IOQ Reminders

Other Things in IOQ

- ❑ Dogs that are “staff only” will have those signs placed on the kennel when necessary and will be noted on the walker board.
- ❑ For various reasons, you may not be able to interact with some dogs. Even cage-side visitation may not be allowed.
- ❑ If the BOH or Shelter Medicine Staff asks you to leave at any point during your work, you must leave IOQ.
 - ❑ If they tell you it will only be a few minutes, you may wait in the hallway, otherwise, you should leave for the day (if you walked any of the sick dogs).
- ❑ Please, do not ask the ACT staff in IOQ if you can visit with other dogs. They do not have the authority to make that decision.

Euthanasia

- ❑ Non treatable Medical Issues
- ❑ Quality of Life Issues
- ❑ Court Decisions
- ❑ Non treatable Behavioral Issues
- ❑ Contact Behavior/Volunteer Dept. with questions about euthanasia
- ❑ You can “opt-in” to the euthanasia email list if you are not on it already
- ❑ Notifications are sent out only for dogs who were available for adoption
 - This means there will be times that you have either walked or worked with a dog and they might be euthanized without being notified. Please ask staff or email volunteers@hshv.org if you would like more information.



Common Diseases

KENNEL COUGH/ UPPER RESPIRATORY INFECTION

Kennel Cough/URI

- Infection
 - ▣ Caused by a complex of viruses and the bacteria known as Bordetella
- Only contagious to other dogs
- Very treatable
 - ▣ Difficult for shelters due to space constraints, stress on the animals, and ease of transmission.
 - ▣ Only our “worst cases” get moved into IOQ- they will be sicker than the watch dogs, or treatment dogs you’re used to seeing.



Kennel Cough/URI



- Must wear full PPE
 - ▣ Change between each dog.
 - ▣ Available in two locations
 - ▣ Order: 1. booties, 2. gown, 3. gloves (over sleeve of gown)
- Risk of bringing this home to your animals is low
 - ▣ Wear required PPE, and change shoes/clothes upon returning home.
- Visit kennel cough dogs first among SICK dogs.



RINGWORM

Ringworm

- Skin disease caused by a fungus.
 - ▣ Is zoonotic**, as well as transmissible to other dogs and cats.
- Very treatable
 - ▣ Very difficult for shelters due to limited space/resources and ease of transmission.
- Very easy to transmit
 - ▣ Can remain in the environment for long periods of time. It is important to treat both the animal and the environment.
- Must wear full PPE
 - ▣ Change it between ringworm dogs, as there are more than one species of ringworm fungus found in dogs.
- Animal should not have any contact with your skin.
 - ▣ Any exposed clothing may retain spores- you should be aware of this and change/wash your clothes immediately upon returning home.



****Zoonotic**= a disease that can be transmitted from animals to people, a disease that normally exists in animals but that can infect humans.

Ringworm

- Risk of bringing this home to your animals is moderate.
 - Most animals living in homes have stronger immune systems than our shelter animals do. If you have an immunocompromised animal or human at home, you should skip any ringworm dogs.
- Treatment for ringworm includes full-body Lyme Dips
 - This has a sulfuric aroma, and may leave the dog wet- you can still interact with a dog that has recently been dipped,.
- We do sometimes make our ringworm dogs available for adoption
 - Customers may come to visit with them while you're back there. This will all be done under the supervision of FOH staff.
- Visit ringworm dogs **last** among IOQ dogs.
 - And you should go directly home change/wash clothing.





GIRARDIA

Giardia

- Zoonotic (transmittable to other dogs/people)
- Intestinal Parasite
 - Causes Diarrhea
- Treatable-but can take several treatments
- Must wear full PPE
 - Change PPE between dogs



PARVOVIRUS

Parvovirus- Do not walk or visit

- These dogs are housed in Parvo Isolation
- Viral infection
 - Most commonly affects puppies, but occasionally adult dogs
- Is not zoonotic
 - Easily transmissible between dogs. It is theoretically possible, but very rare for the virus to pass from dogs to cats.
- These dogs become very sick, very quickly.
 - It can be very distressing to see a dog with parvovirus. They are very lethargic, and severely dehydrated due to vomiting and diarrhea.



Parvovirus - Do not walk or visit

- Potentially treatable
 - Difficult for shelters to be successful due to intensive nature of treatment.
- We can only attempt to treat if we catch it at a certain stage of the disease and treatment will be unsuccessful in certain cases.
- **Do not walk or visit.** Absolutely no interaction with parvovirus dogs.
- **Parvo comforting is a separate training and role!**



What's Next & Scheduling

Scheduling in VIC

- ❑ When choosing to walk dogs in IOQ, you may schedule yourself back-to-back for both Holding and IOQ.
- ❑ Plan on walking Holding dogs first and then dogs in IOQ.
- ❑ Time slots in VIC are “Choose My Time.”
- ❑ IOQ Walking Hours
 - ❑ 8am start time, 7 days a week
 - ❑ Walks end M-F 6pm ; Sa-Su 5pm

VIC Assignment Name:
Dog Walking- IOQ

Next steps to success!

- ❑ Completed the independent study- ✓
- ❑ Sign the electronic confidentiality form & training complete form, email to volunteers@hshv.org - ✓
- ❑ Receive email from Volunteer Department confirming training is complete - ✓
- ❑ Schedule yourself in VIC! - ✓



Thank you!

